

Nearer, Still Nearer

Instrumental Duet and Piano
E-flat Alto Saxophone

Leila N. Morris
arranged by Faye Lopez

Warmly ♩ = 92

PART I

5

mp

9

13

mf

17

© Copyright 2014 by Jantz Music Publications, Greenville, SC.

All Rights Reserved. Printed in the U.S.A.

Duplication in any form prohibited without written permission from the publisher.

www.jantzmusic.com

Nearer, Still Nearer (A. Sax. duet, pt. I) - 2

51 *f*

55 *mf*

59

63 *f* *mf*

67

The image shows a musical score for saxophone duet, measures 51-67. The score is written in treble clef with a key signature of one flat (B-flat). The dynamics are marked as *f* (forte) and *mf* (mezzo-forte). The score is partially obscured by black redaction boxes at the top and bottom. A large, diagonal watermark reading 'Sample Parts' is overlaid across the score.

COPYING IS ILLEGAL

Nearer, Still Nearer

Instrumental Duet and Piano
E-flat Alto Saxophone

Leila N. Morris
arranged by Faye Lopez

Warmly ♩ = 92

PART II

mf

8

12

mp

16

mf

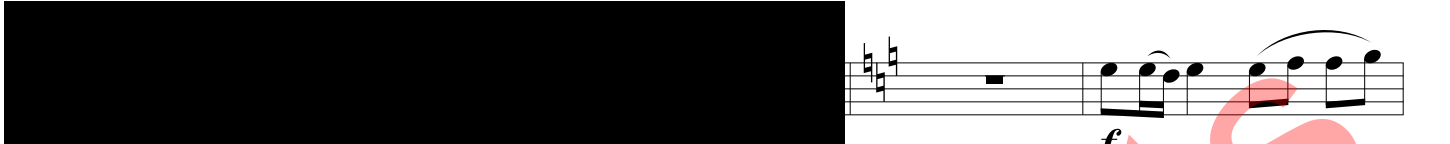
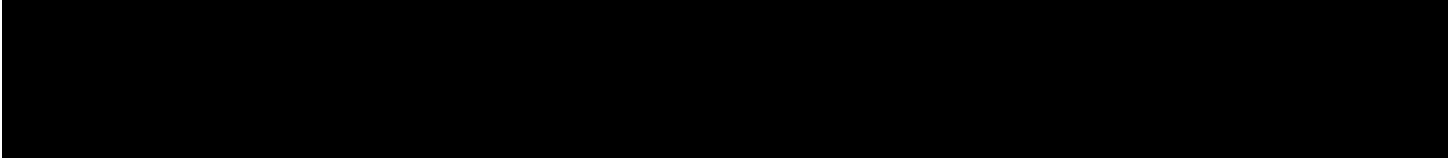
© Copyright 2014 by Jantz Music Publications, Greenville, SC.

All Rights Reserved. Printed in the U.S.A.

Duplication in any form prohibited without written permission from the publisher.

www.jantzmusic.com

Nearer, Still Nearer (A. Sax. duet, pt. II) - 2



First staff of music, starting with a treble clef and a key signature of one sharp (F#). The staff contains several measures of music, including a dynamic marking of *f* (forte).

Second staff of music, starting with measure 53. It features a dynamic marking of *mf* (mezzo-forte) and includes a crescendo hairpin.

Third staff of music, starting with measure 57. It includes a dynamic marking of *f* and a second ending bracket labeled with the number 2.

Fourth staff of music, starting with measure 62. It features a dynamic marking of *f* and includes a sharp sign (#) on the first note.

Fifth staff of music, starting with measure 66. It features a dynamic marking of *mf* and is partially obscured by a redacted black bar on the right side.



COPYING IS ILLEGAL